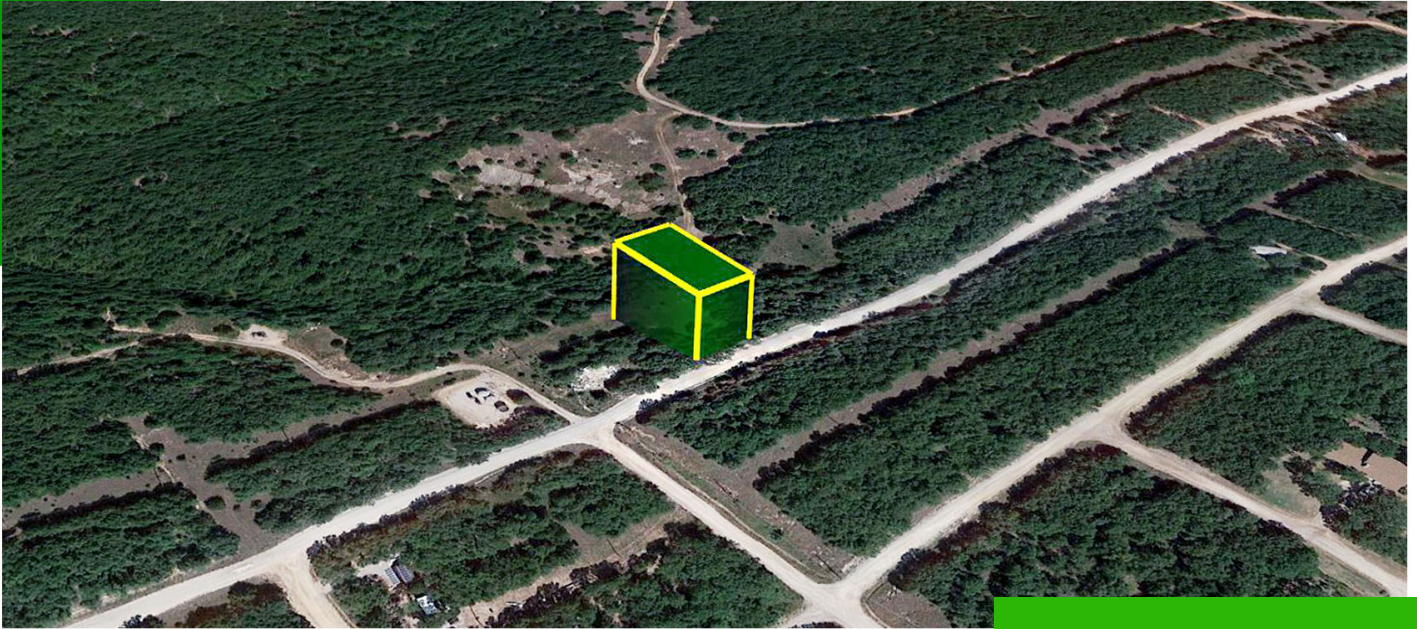


"0.26-ACRE LOT LOCATED IN OSAGE, OKLAHOMA"



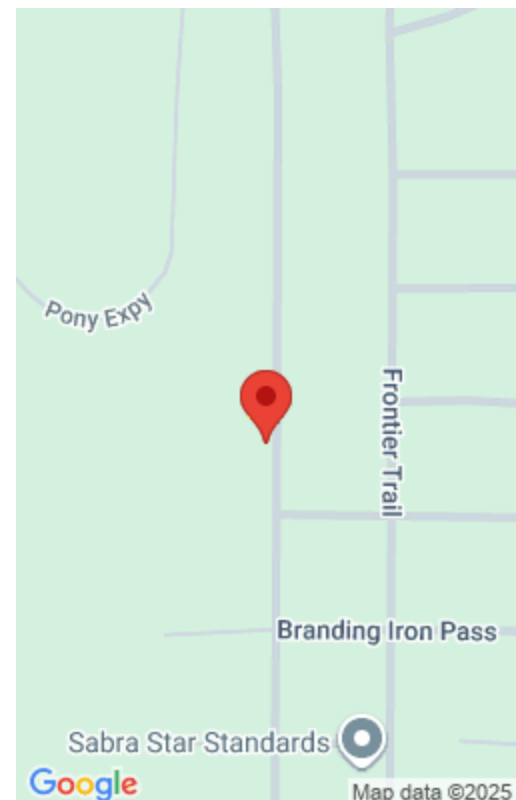
\$7,986

28-21-09-07100 - 0.26 ACRES - SUNSET RIDGE RD, OSAGE, OK 74054

<https://agtpropertiesusa.com>

Owner Financing Available - 0.26 Acre Lot in Frontier Shores Subdivision Discover the charm of owning your own piece of land in Osage County, Oklahoma. This 0.26-acre lot in the Frontier Shores Subdivision is the perfect setting for your dream home. With Keystone Lake and the Arkansas River just minutes away, you'll enjoy quick access...

- Oklahoma
- Cash Discount Price
- Available



Basics

Parcel ID: 28-21-09-07100

Approx Dimensions: 75' x 150' x 75' x 150'

State: Oklahoma

Type: Oklahoma

Size: 0.26

County: Osage

Category: Cash Discount Price

Status: Available

Property Details

Cash Price: 7986

Term Option 2: \$250 down, \$250 for 36 months, for a total price of \$9,250

Google Map Link: [Driving Directions](#)

Northwest Corner: 36.2679, -96.3536

Southwest Corner: 36.2677, -96.3536

Legal Description: Frontier Shores I Lot 133

Terrain: Uneven

Power: Provided by Public Service Company of Oklahoma (PSO) (833) 776-7697

Sewer: A Septic Tank is Required

RV Living: Not Allowed

Manufactured Homes: Not Allowed

POA Fees Per Year: \$50.00

County Contact Information: For more information, call Osage County & Zoning Planning at (918) 287-3981

Term Option 1: \$200 down, \$200 for 47 months, for a total price of \$9,600

Term Option 3: \$350 down, \$350 for 24 months, for a total price of \$8,750

GPS Coordinates (center) at the road: 36.2678, -96.3531

Northeast Corner: 36.2679, -96.3531

Southeast Corner: 36.2677, -96.3531

Elevation: 860'

Access: Dirt Road

Water: Provided by Osage PWA (918) 354-2196

Zoning: Vacant - Single Family Residential

Mobile Home Living: Not Allowed

POA: Frontier Shores I

Taxes Per Year: \$19.00

Conveyance: Warranty Deed

