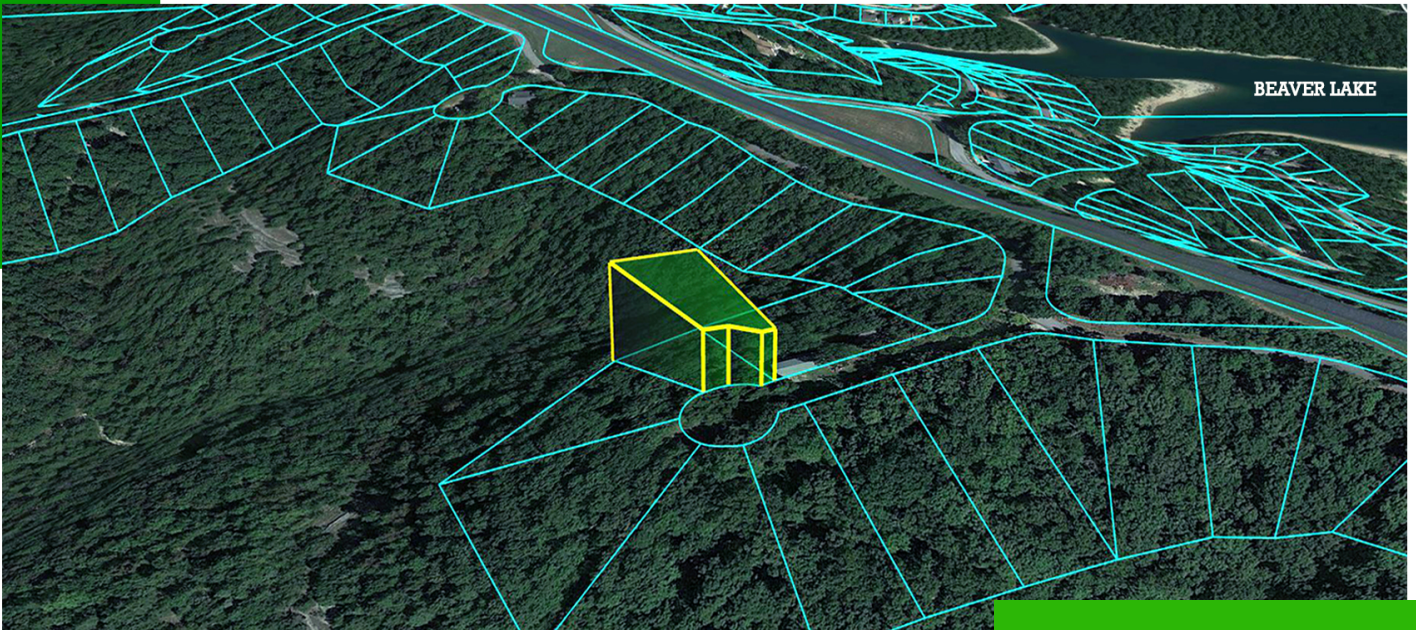


"0.42-ACRES LOT LOCATED IN GARFIELD, ARKANSAS"



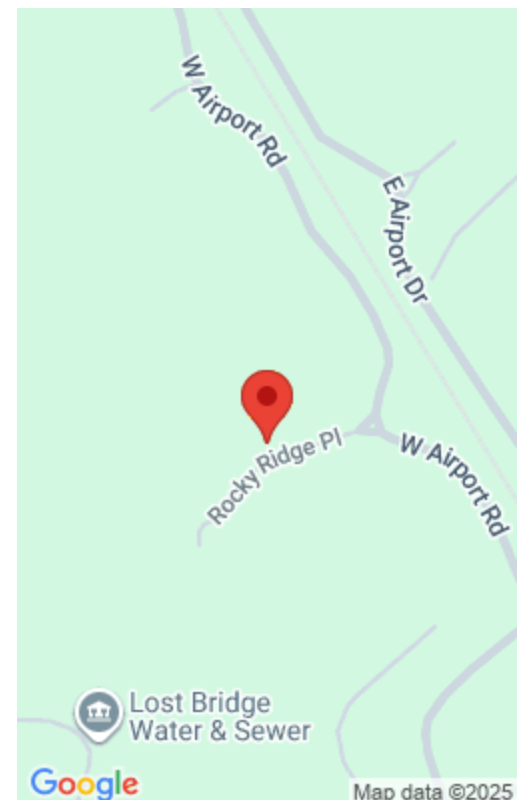
\$4,989

15-05447-000 - 0.42 ACRES - ROCKY RIDGE PL, GARFIELD, AR 72732

<https://agtpropertiesusa.com>

Owner Financing Available - 0.42-acre large lot in the peaceful Moulder Hollow Subdivision of Lost Bridge Village. Just a short walk to Beaver Lake, this lot offers a perfect blend of nature and convenience. With power and water available at the street, you're ready to create your private retreat. As part of this welcoming community,...

- Arkansas
- Cash Discount Price
- Available



Basics

Parcel ID: 15-05447-000	Size: 0.42
Approx Dimensions: 75' x 209' x 112' x 230'	County: Benton
State: Arkansas	Category: Cash Discount Price
Type: Arkansas	Status: Available

Property Details

Cash Price: 4989	Term Option 1: \$200 down, \$200 for 27 months, for a total price of \$5,600
Term Option 2: \$300 down, \$300 for 17 months, for a total price of \$5,400	Term Option 3: \$400 down, \$400 for 12 months, for a total price of \$5,200
Google Map Link: Driving Directions	GPS Coordinates (center) at the road: 36.3899, -93.9128
Northwest Corner: 36.3904, -93.9132	Northeast Corner: 36.3905, -93.9129
Southwest Corner: 36.3899, -93.9129	Southeast Corner: 36.3899, -93.9126
Legal Description: Section 5, Lot 62, Moulder Hollow Subdivision of Lost Bridge Village	Elevation: 1380'
Terrain: Uneven	Access: Gravel Road
Power: Provided by Carroll Electric Cooperative Corporation (800) 432-9720	Water: Provided by Lost Bridge Village Water & Sewer (479) 359-3697
Sewer: Provided by Lost Bridge Village Water & Sewer (479) 359-3697	Zoning: Vacant - Single Family Residential
RV Living: Not Allowed	Mobile Home Living: Not Allowed
Manufactured Homes: Not Allowed	POA: Lost Bridge Village Community Association
POA Fees Per Year: \$112.00	Taxes Per Year: \$145.00
NEBCO VFD Membership Dues Per Year: 84.00	County Contact Information: For more information, call Benton County Planning Department at (479) 464-6166
Conveyance: Warranty Deed	

